



iCAMHD
by hyperDENT
included



5 AX



6 mm
1,0kW



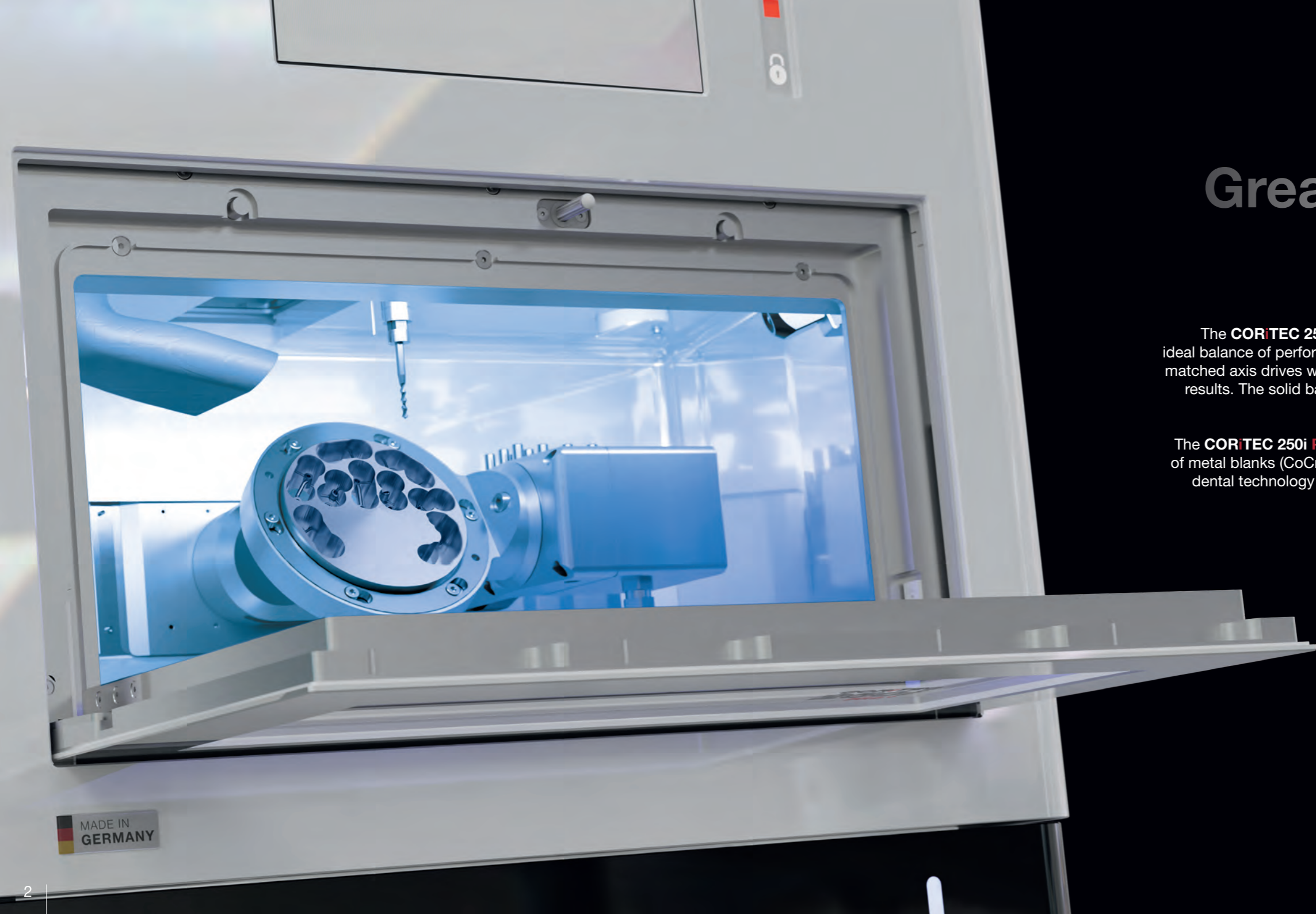
iCAM
integrated

DRY
WET

CORiTEC 250i PRO+

The Best Price- Performance Ratio

Unlimited Efficiency for Daily Lab Work



Great Performance

TOP PRICE

The **CORITEC 250i PRO*** is a new milling machine that impresses with its ideal balance of performance, versatility and space requirements. The optimally matched axis drives work vibration-free and thus ensure impressive production results. The solid basic structure made of an mono-block cast body ensures low-vibration movements.

The **CORITEC 250i PRO*** is even ideally suited for the demanding processing of metal blanks (CoCr and Ti). Of course, all other materials commonly used in dental technology can also be professionally wet and dry milled or grinded.

ION

2-fold
Ionizer

A
|
B

Auto-
calibration



Automated
Cleaning
Function



Zero Point
Clamping System*



Metal
Processing



Wide Range
of Holder Systems

MADE IN
GERMANY

ENORMOUS FLEXIBILITY at a High Technical Level



Intelligent Software
SmartControl

The system is controlled by SmartControl software, which provides intuitive operation via a full HD touchscreen.

The iCAM HD software is included free of charge for 1 year with the purchase of the machine.

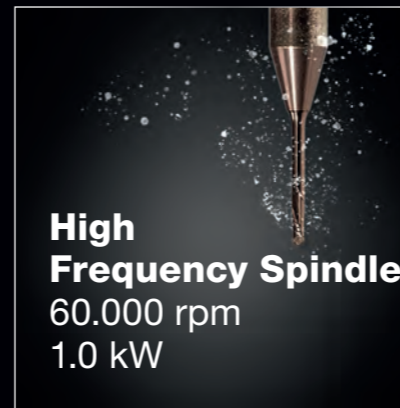


iCAM HD by hyperDENT
Included

A compact 5-axis milling machine with a powerful spindle that runs smoothly.



5-Axis
Metal Processing



High
Frequency Spindle
60.000 rpm
1.0 kW

6 mm shaft milling tools combined with the milling spindle meet the highest material requirements.

The tool magazine holds 10 tools and can be completely changed in one easy step, e.g. for different material groups.

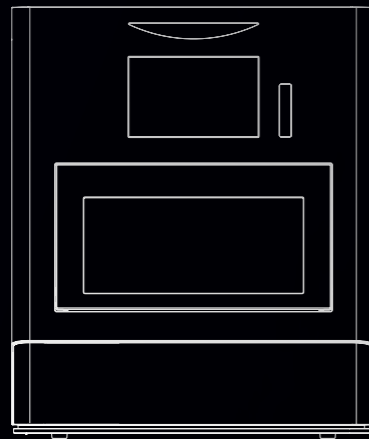


Interchangeable
10-Fold
Tool Changer

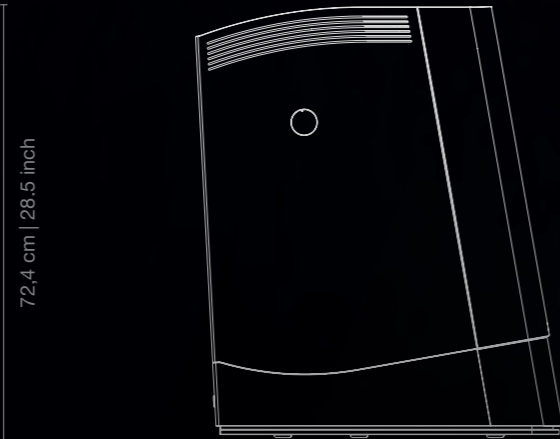
VERSATILE
in Use

The Compact Powerhouse

FOR ALL TYPICAL LAB APPLICATIONS

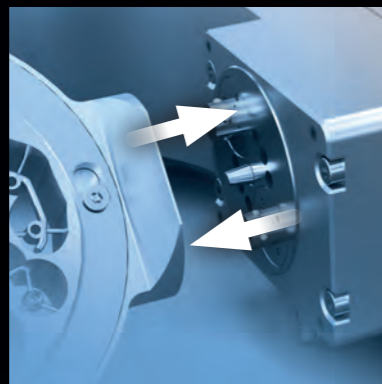


59.1 cm | 23.26 inch



61.3 cm | 24.13 inch

72.4 cm | 28.5 inch



WET

DRY

5 AX

6 mm
10x

Temperature icon

Hand icon

Tray icon

Circular icon

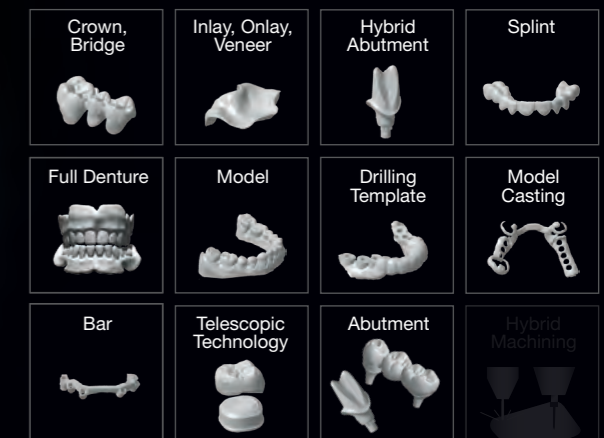
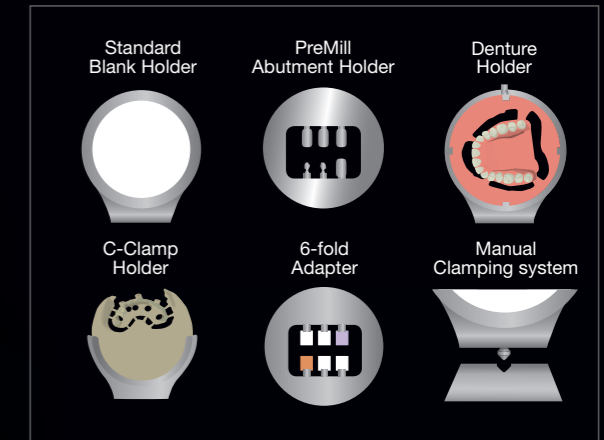
ION

Materials and Applications

VERSATILE POSSIBILITIES



PMMA	WAX
Zr	COMPOSITE
PEEK	SINT
Glass Ceramics	PreFab Abutments
CoCr	Ti



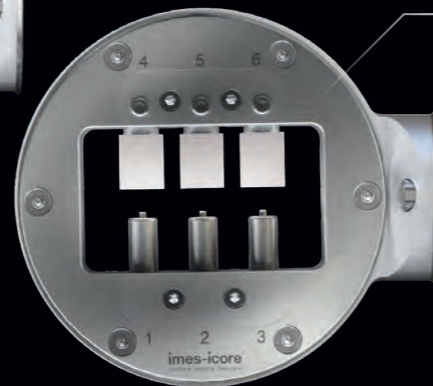
Holder & Applications



Blank holder



C-Clamp holder



6-fold adapter

Blank Holder

- ✓ Closed stainless blank holder for high stability
- ✓ Processing of all common materials from blanks

C-Clamp Holder

- ✓ Half-open blank holder
- ✓ Enables 5-axis machining up to a 90 degree axis angle
- ✓ Expands the technical capabilities of your milling machine

6-Fold Adapter

- ✓ Processing up to 6 blocks / abutments simultaneously
- ✓ Interchangeable strips for various adapter systems



Manufacturing of Full Dentures by Milling

- ✓ Time and cost savings
- ✓ High reproducibility and accuracy of fit
- ✓ Flexible and functional denture base and occlusal design

CORiTEC preMill Abutments

- ✓ Short production times
- ✓ Validated complete system for abutment fabrication
- ✓ High accuracy of fit with prefabricated implant interface



Bars and Bridges

- ✓ High strength and stability
- ✓ CoCr and Titanium blanks
- ✓ Good surface finish and precision

Grinding of CAD/CAM Blocks

- ✓ 6-fold adapter enables efficient fabrication
- ✓ Crowns, onlays, inlays, veneers, bridge frameworks



Special Applications

for Metal Processing

Highspeed Milling Tools

For high feed rates

T60 - 3.0 | 6.0 mm
highspeed milling tool short (l = 15 mm)

T60 Ti 3.0 mm Ø 6 mm up to 15 mm Blades

Art.-No. 530031 3006

T61 - 3.0 | 6.0 mm
quattro speed milling tool (l = 15 mm)

T61 CoCr 3.0 mm Ø 6 mm up to 15 mm Blades

Art.-No. 526025 3006

Torus Milling Tools

Precise and smooth surfaces when producing dentures. The special geometry ensures high precision and ideal milling results.

T62 - 2.0 | 6.0 mm
torus milling tool (r = 0,2 mm, l = 16 mm, four blades)

T62 Ti CoCr 2.0 mm Ø 6 mm up to 15 mm Blades

Art.-No. 526025 2006

T63 - 1.5 | 6.0 mm
torus milling tool (r = 0,08 mm, l = 7 mm, two blades)

T63 Ti CoCr 1.5 mm Ø 6 mm up to 15 mm Blades

Art.-No. 526025 1506

T64 - 1.5 | 6.0 mm
torus milling tool (r = 0,08 mm, l = 15 mm, two blades)

T64 Ti CoCr 1.5 mm Ø 6 mm up to 15 mm Blades

Art.-No. 526028 1506

End mills

State-of-the-art end mills for perfect fits.

T67 - 2.0 | 6.0 mm
shaft milling tool short (l = 7 mm, four blades)

T67 Ti CoCr 2.0 mm Ø 6 mm up to 15 mm Blades

Art.-No. 526002 2006

T68 - 1.5 | 6.0 mm
shaft milling tool long (l = 15 mm, four blades)

T68 Ti CoCr 1.5 mm Ø 6 mm up to 15 mm Blades

Art.-No. 526021 1506

T69 - 1.5 | 6.0 mm
shaft milling tool (l = 7 mm, four blades)

T69 Ti CoCr 1.5 mm Ø 6 mm up to 15 mm Blades

Art.-No. 530032 1506

Drilling Tools

Fast and precise production of drill channels in abutments, implants and bars.

T80 - 2.5 | 6.0 mm
drilling tool (l = 22 mm)

T80 Ti CoCr 2.5 mm Ø 6 mm up to 20 mm Drill

Art.-No. 526023 2506

T81 - 1.5 | 6.0 mm
drilling tool (l = 18 mm)

T81 Ti CoCr 1.5 mm Ø 6 mm up to 20 mm Drill

Art.-No. 526023 1506

T82 - 2.65 | 6.0 mm
drilling tool (l = 21 mm)

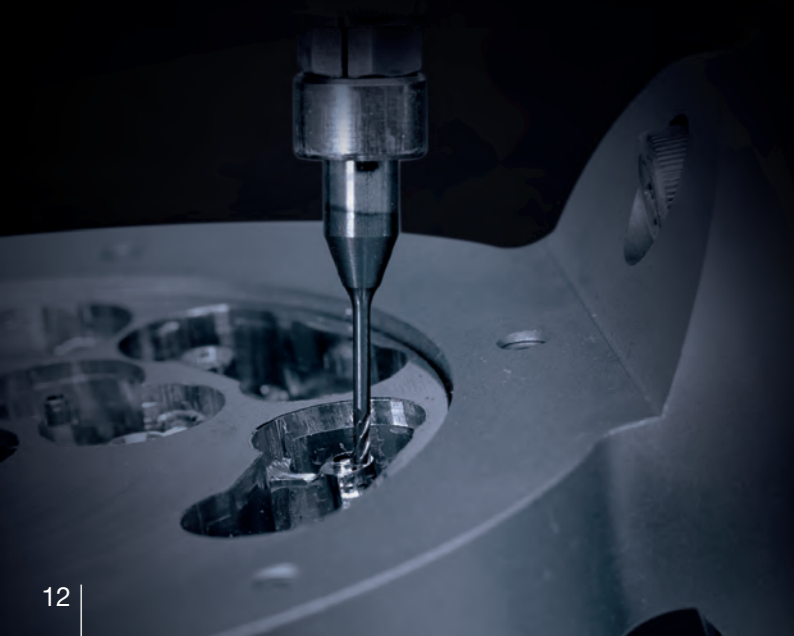
T82 Ti CoCr 2.65 mm Ø 6 mm bis 20 mm Drill

Art.-No. 526031 26506

T83 - 2.25 | 6.0 mm
drilling tool (l = 21 mm)

T83 Ti CoCr 2.25 mm Ø 6 mm bis 20 mm Drill

Art.-No. 526032 22506



Thread Milling Tool M2

Simple and quick production of M2 threads in defined blind holes. Ideal for Rhein83 implant systems.

T103 - M2 | 6.0 mm
Thread milling tool

Ti
CoCr

6 mm

Art.-No. 526040 2006



T-slot tools

High-performance T-slot milling cutter for angled screw channels and complex work with excellent results.

T121 - Ø 1.6 x 0.7 | 6.0 mm
T-tool 90° (d = 0.65 mm, l = 7.5 mm, three blades)

Ti
CoCr

1.6 mm Ø 6 mm

Blades

Art.-No. 530040 1606

T122 - Ø 1.7 x 0.7 | 6.0 mm
T-tool 90° (d = 0.65 mm, l = 8.0 mm, three blades)

Ti
CoCr

1.7 mm Ø 6 mm

Blades

Art.-No. 530040 1706

T123 - Ø 1.8 x 1.0 | 6.0 mm
T-tool 90° (d = 0.9 mm, l = 7.1 mm, three blades)

Ti
CoCr

1.8 mm Ø 6 mm

Blades

Art.-No. 530040 1806

T124 - Ø 2.0 x 1.0 | 6.0 mm
T-tool 90° (d = 1.0 mm, l = 9.5 mm, three blades)

Ti
CoCr

2.0 mm Ø 6 mm

Blades

Art.-No. 530040 2006

Standard Tools

T11 - 2.5 | 6.0 mm
radius milling tool (single blade, slide coated)

PMMA
WAX
PEEK

2.5 mm Ø 6 mm

Blade

up to 25 mm

Art.-No. 530004 2506

T1/T6 - 3.0 | 6.0 mm
radius milling tool short (l = 15 mm)

T1	Ti
T6	CoCr

3.0 mm Ø 6 mm

Blades

up to 15 mm

Art.-No. 526029 3006

T11/T13 - 2.5 | 6.0 mm
radius milling tool

PMMA
WAX
Zr

2.5 mm Ø 6 mm

Blades

up to 25 mm

Art.-No. 526019 2506

T2/T7 - 2.0 | 6.0 mm
radius milling tool short (l = 12 mm)

T2	Ti
T7	CoCr

2.0 mm Ø 6 mm

Blades

up to 15 mm

Art.-No. 526029 2006

T12 - 1.0 | 6.0 mm
radius milling tool (single blade, slide coated)

PMMA
WAX
PEEK

1.0 mm Ø 6 mm

Blade

up to 25 mm

Art.-No. 530004 1006

T3/T8 - 1.5 | 6.0 mm
radius milling tool short (l = 12 mm)

T3	Ti
T8	CoCr

1.5 mm Ø 6 mm

Blades

up to 15 mm

Art.-No. 526029 1506

T12/T14 - 1.0 | 6.0 mm
radius milling tool

PMMA
WAX
Zr

1.0 mm Ø 6 mm

Blades

up to 25 mm

Art.-No. 526019 1006

T4/T9 - 1.0 | 6.0 mm
radius milling tool short (l = 9 mm)

T4	Ti
T9	CoCr

1.0 mm Ø 6 mm

Blades

up to 15 mm

Art.-No. 526029 1006

T13/T40/T50 - 2.5 | 6.0 mm
radius milling tool (diamond coated)

Zr
SINT
COMP

2.5 mm Ø 6 mm

Blades

up to 25 mm

Art.-No. 526013 2506

T5/T10 - 1.5 | 6.0 mm
shaft milling tool short (l = 12 mm, four blades)

T5	Ti
T10	CoCr

1.5 mm Ø 6 mm

Blades

up to 15 mm

Art.-No. 526002 1506

T14/T41/T51 - 1.0 | 6.0 mm
radius milling tool (diamond coated)

Zr
SINT
COMP

1.0 mm Ø 6 mm

Blades

up to 25 mm

Art.-No. 526013 1006

T15/T42/T52 - 0.6 | 6.0 mm
radius milling tool (conical)

T15 **PMMA**
WAX
Zr

T42 **SINT**
T52 **COMP**

0.6 mm Ø 6 mm

up to 25 mm

Blades

Art.-No. 526019 0606

T21 - 2.5 | 6.0 mm
radius grinding tool (diamond)

T21 **glass ceramics**

2.5 mm Ø 6 mm

Art.-No. 526005 2506

T33/ T43/ T53 - 0.3 | 6.0 mm
radius milling tool (conical)

T33 **PMMA**
WAX
Zr

T43 **SINT**
T53 **COMP**

0.3 mm Ø 6 mm

up to 25 mm

Blades

Art.-No. 526019 0306

T16 - 1.5 | 6.0 mm
radius milling tool long (l = 15 mm)

T16 **PMMA**
WAX
PEEK

1.5 mm Ø 6 mm

up to 25 mm

Blades

Art.-No. 526019 1506

T22 - 1.0 | 6.0 mm
radius grinding tool (diamond)

T22 **glass ceramics**

1.0 mm Ø 6 mm

Art.-No. 526005 1006

T34 - 3.0 | 6.0 mm
radius milling tool long (l = 27 mm)

T34 **PMMA**
WAX

3.0 mm Ø 6 mm

up to 30 mm

Blades

Art.-No. 526012 3006

Long-Tools

Application range: Blanks > 15mm

T26 - 3.0 | 6.0 mm
radius milling tool long (l = 20 mm)

T26 **Ti**
CoCr

3.0 mm Ø 6 mm

16 - 20 mm

Blades

Art.-No. 526030 3006

T27 - 2.0 | 6.0 mm
radius milling tool long (l = 16 mm)

T27 **Ti**
CoCr

2.0 mm Ø 6 mm

16 - 20 mm

Blades

Art.-No. 526030 2006

T28 - 1.5 | 6.0 mm
radius milling tool long (l = 15 mm)

T28 **Ti**
CoCr

1.5 mm Ø 6 mm

16 - 20 mm

Blades

Art.-No. 526030 1506

T17 - 1.5 | 6.0 mm
shaft milling tool (l = 15 mm)

T17 **PMMA**
WAX
Zr

1.5 mm Ø 6 mm

up to 25 mm

Blades

Art.-No. 526001 1506

T23 - 0.6 | 6.0 mm
radius grinding tool (conical, diamond)

T23 **glass ceramics**

0.6 mm Ø 6 mm

Art.-No. 526005 0606

T35 - 2.0 | 6.0 mm
radius milling tool long (l = 20 mm)

T35 **PMMA**
WAX

2.0 mm Ø 6 mm

up to 30 mm

Blades

Art.-No. 526012 2006

T18 - 0.5 | 6.0 mm
radius milling tool (l = 4 mm)

T18 **UNIVERSAL***

0.5 mm Ø 6 mm

up to 15 mm

Blades

Art.-No. 526026 0506

T24 - 1.5 | 6.0 mm
radius grinding tool (diamond)

T24 **glass ceramics**

1.5 mm Ø 6 mm

Art.-No. 526005 1506

T36 - 4.0 | 6.0 mm
radius milling tool long (l = 31 mm)

T36 **PMMA**
WAX

4.0 mm Ø 6 mm

up to 30 mm

Blades

Art.-No. 530019 4006

Roughing Tool

T29 - 1.0 | 6.0 mm
radius milling tool long (l = 11 mm)

T29 **Ti**
CoCr

1.0 mm Ø 6 mm

16 - 20 mm

Blades

Art.-No. 526030 1006

T19 - 0.5 | 6.0 mm
shaft milling tool (l = 4 mm)

T19 **UNIVERSAL***

0.5 mm Ø 6 mm

up to 15 mm

Blades

Art.-No. 526001 0506

T30 - 4.0 | 6.0 mm
shaft milling tool long (l = 32 mm, single blade, slide coated)

T30 **PMMA**
WAX
PEEK

4.0 mm Ø 6 mm

up to 30 mm

Blade

Art.-No. 526012 4006

Calibration Tool

T98 - 2.5 | 6.0 mm
shaft milling tool (l = 20 mm, three blades)

T98 **CALIBR.**

2.5 mm Ø 6 mm

Blades

Art.-No. 526024 2506

T37 - 1.5 | 6.0 mm
torus milling tool (r = 0.08 mm, l = 20 mm)

T37 **PMMA**
WAX
Zr

1.5 mm Ø 6 mm

up to 20 mm

Blades

Art.-No. 530035 1506

T20 - 0.6 | 6.0 mm
radius milling tool (conical)

T20 **Ti**
CoCr

0.6 mm Ø 6 mm

up to 15 mm

Blades

Art.-No. 526003 0606

T32 - 0.6 | 6.0 mm
radius milling tool long (l = 12 mm)

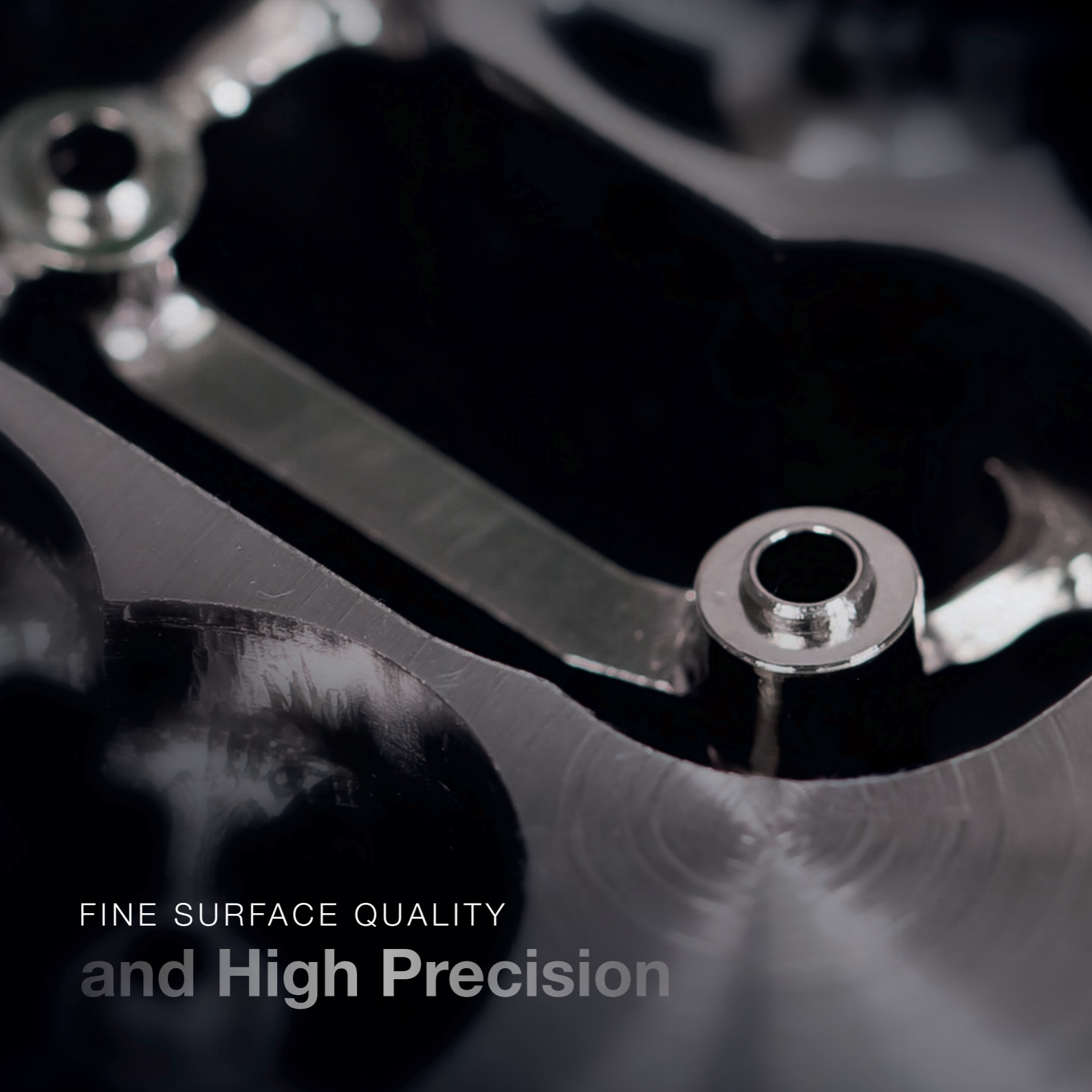
T32 **PMMA**
WAX
Zr

0.6 mm Ø 6 mm

up to 25 mm

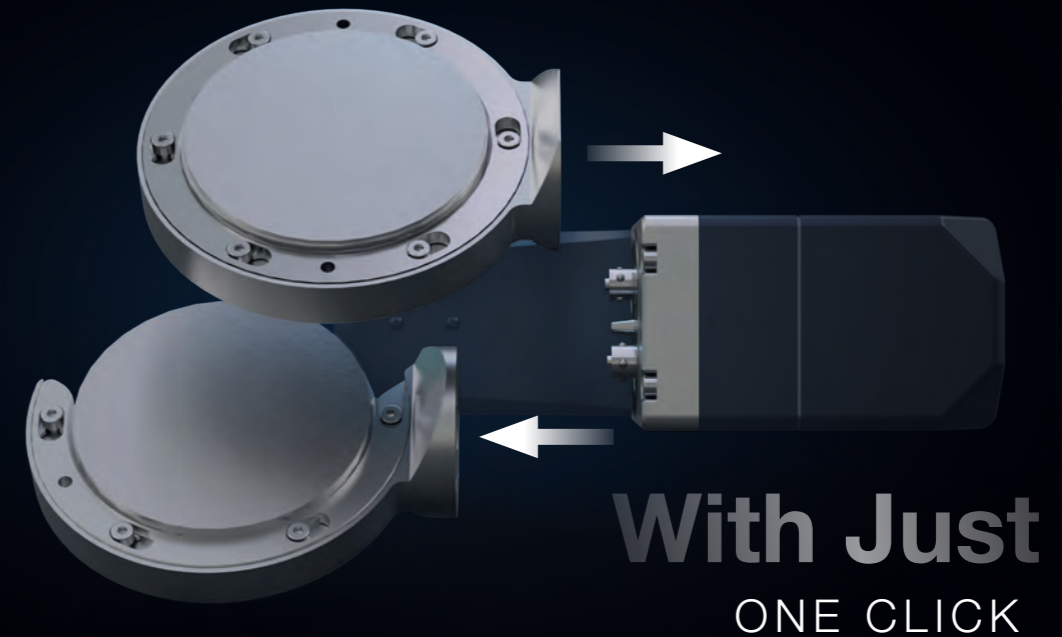
Blades

Art.-No. 526012 0606



FINE SURFACE QUALITY
and High Precision

Zero Point Clamping System*



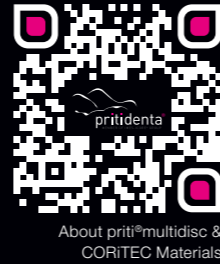
Blank / Adapter Change without Losing Position

For a faster blank holder change with just one click, we offer an **optional extension** for the CORITEC 250i PRO*: the Zero Point Clamping System module. This extension enables a more efficient and faster blank/adapter change, which significantly optimizes the workflow, especially when working with many different materials.

- ✓ Ability to integrate multiple adapters
- ✓ Full flexibility in processing options

* Optional

Materials by pridenta®



priti® multidisc (Zirconium Dioxide)

High-end zirconia for the highest mechanical and esthetic demands. Indications up to 16-unit bridges, only with High Translucent max. 3-unit bridges.

- ✓ Wide range of shades and heights available
- ✓ Available in 10, 12, 15, 18, 20 and 25 mm

	Translucency	Strength
Multi Translucent	49-40 %	800 - 1150 MPa
Multi Translucent PLUS	49-45 %	800 - 1150 MPa
High Translucent	49 %	> 650 MPa
Extra Translucent	45 %	> 1150 MPa
Translucent	40 %	> 1150 MPa
Opaque	35 %	> 1150 MPa



CORiTEC splint comfort polymers

Extremely comfortable and biocompatible material for fabricating therapeutic splints such as occlusal or stabilizing splints. Becomes more flexible at oral temperature for maximum comfort.

- ✓ Available in 16 mm and 20 mm



CORiTEC splint basic polymers

Crystal clear material for making therapeutic splints and drill guides.

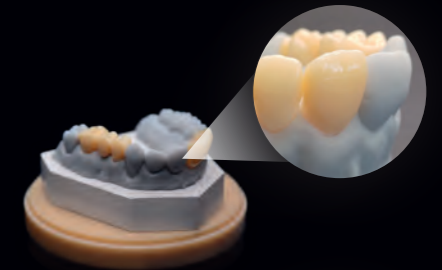
- ✓ Available in 16 mm and 20 mm



CORiTEC temp PMMA disc

An excellent workable material that is suitable for long-term temporary restorations with a wear time of up to three years and that contains an intrinsic shade gradient.

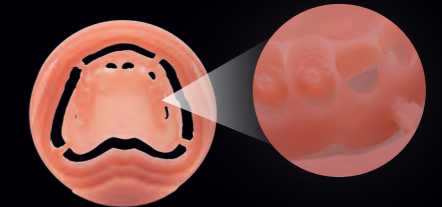
- ✓ Available in 8 Vita colors in 16 mm and 20 mm



CORiTEC gum PMMA disc

For gingiva replacement.

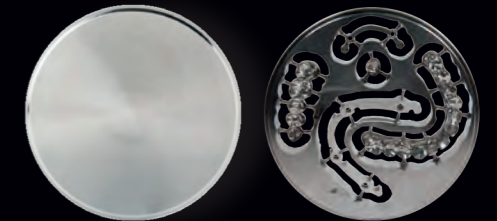
- ✓ Available in 25 mm



CORiTEC Titan Grade 5 disc

CORiTEC Titan Grade 5 milling blanks in titanium alloys are particularly suitable for the manufacture of dental implants, bar work and combination work. This material is characterized by good millability and very good biocompatibility.

- ✓ Available in 10, 12, 15, 18, 20 and 25 mm



CORiTEC CoCr M6 & W8 disc

The cobalt-based non-precious dental alloy is free of nickel, cadmium, beryllium and lead. The restorations can be veneered with commercially available, normal-fusing firing ceramics with an appropriate coefficient of thermal expansion (CTE).

- ✓ Available in 10, 12, 13.5, 15, 16 and 18 mm



Glass ceramics

- ✓ VITA ENAMIC® multiColor
- ✓ VITA ENAMIC® ST
- ✓ VITABLOCS® TriLuxe forte
- ✓ GC® Initial LiSi Block
- ✓ GC® cerasmart270



CORiTEC® SmartControl

One Touch Ahead!

The SmartControl software enables intuitive operation of our milling machines — from selecting jobs to milling or quering th machine status. The self-explanatory handling makes it easy to begin and starting the milling process requires just two clicks. Benefit from the smart time saving for your workflow!

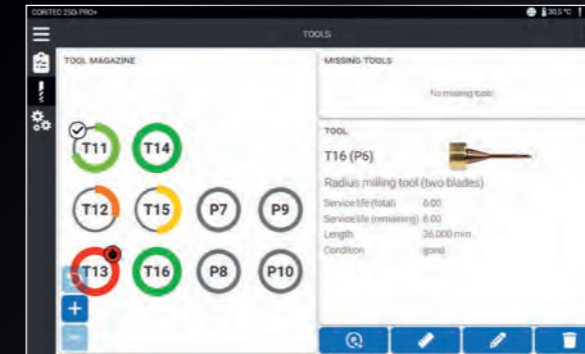
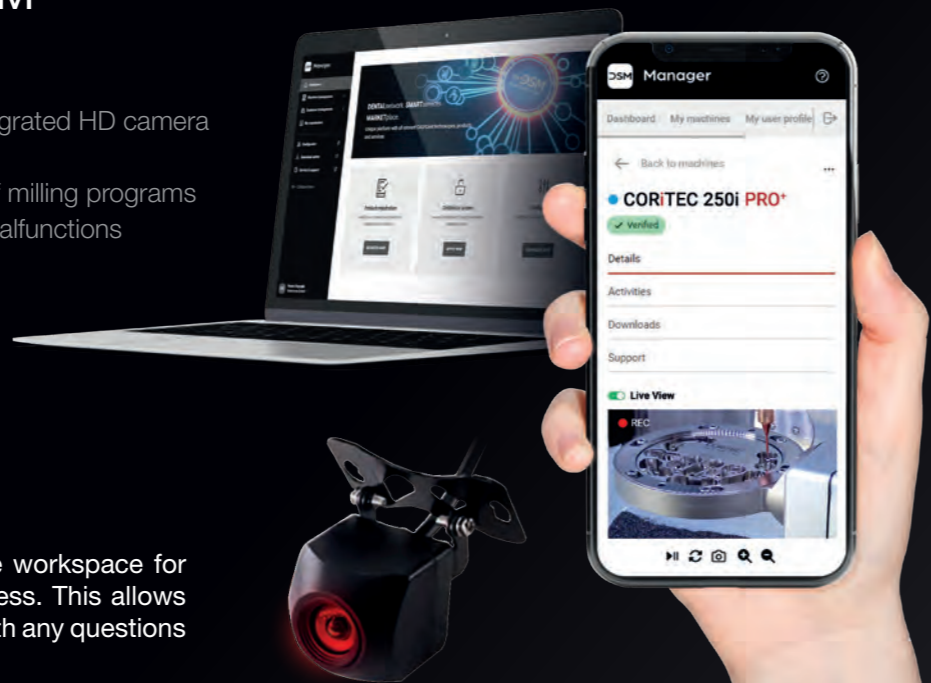
- ✓ Modern design and easy touch operation
- ✓ Intelligent job selection
- ✓ Easy tool and material loading
- ✓ Automatic machine calibration
- ✓ Wizard-driven cleaning and maintenance
- ✓ Multilingual user interface: English, German, Chinese, Spanish, French, Portuguese, Japanese, Arabic
- ✓ Automatic update function

Connection to the DSM (DentalSmartMarket)

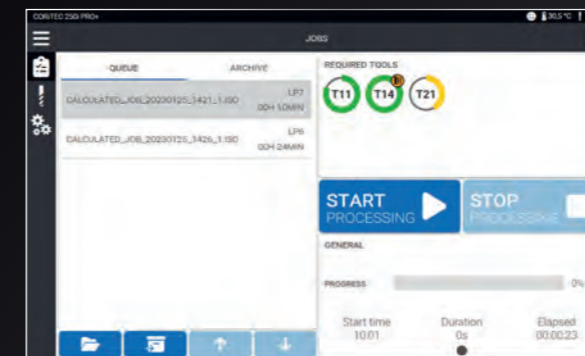
- ✓ Online machine monitoring with integrated HD camera
- ✓ Simple and straightforward
- ✓ Active notification, e.g. at the end of milling programs or machine programs or machine malfunctions
- ✓ Display of processing status
- ✓ Displays maintenance intervals and much more...

Online Monitoring of the Milling Process

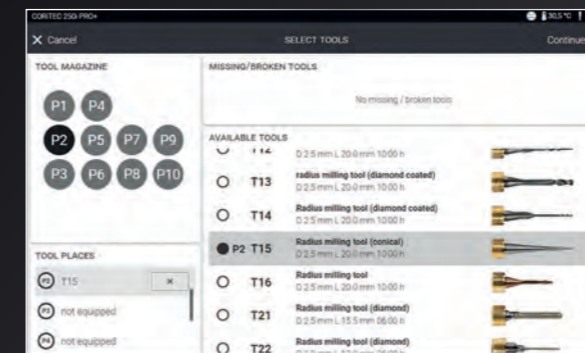
An HD camera is integrated into the workspace for online monitoring of the milling process. This allows the support team to assist the user with any questions or challenges as quickly as possible.



Optimized for touch screen operation



Automatic transfer of information from CAM software



Optimal tool management

Easy-to-Use SOFTWARE



Integrated HD camera

Scanner

CORiTEC i3Dscan color

- ✓ Automatic object guidance into the field of view
- ✓ Modern touch control design
- ✓ Easy operation with 180° opening

CORiTEC i3Dscan color HR

- ✓ Enormously high scanning efficiency and accuracy
- ✓ Color texture scan
- ✓ Blue light LED & high resolution camera (2.8 MP)
- ✓ All modules included in the scope of delivery



Suction Systems

The iVAC eco+ is the universal solution for all tabletop machines from imes-icore.

The iVAC silent PRO impresses with its compact design and high quality technology at an affordable price.

	iVAC silent PRO	iVAC eco+
Airflow	240 m³/hr	260 m³/hr
Power	1610 W	1200 W
Filter system	Teflon filter cartridge, automatic cleaning feature	Dust drawer, HEPA filter
Filter volume	8 l / 30.28 gpm	25 l / XX gpm
W x D x H	270 x 540 x 535 mm 10.6 x 21.2 x 21.1 inch	440 x 460 x 750 mm 7.3 x 18.1 x 29.5 inch
Supply voltage	115 - 230 V, 50/60 Hz	100-240 V, 50/60 Hz



CAM Software

CORiTEC iCAMHD

The software offers a high degree of automation and efficient order management. An intuitive workflow enables quick training. Users can manage processing options individually. Automatic worldwide updates keep the software up to date at all times. User-defined quality standards and toolpath generation strategies ensure surface quality and precision. Comprehensive collision monitoring ensures safety.

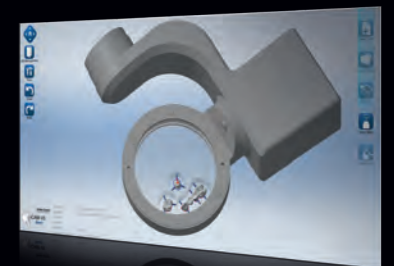
- ✓ hyperDENT based CAM software
- ✓ Built-in CAM templates for fast, accurate milling results
- ✓ No additional entry costs
- ✓ Free iCAM HD software for 1 year
- ✓ Annual renewal available for a small fee



CORiTEC iCAM V5 smart*

iCAM V5 software provides precise 5-axis milling data for the best surface quality and fit accuracy, especially in hard materials such as glass-ceramics, cobalt-chrome and titanium.

- ✓ All strategies optimized for 5-axis simultaneous machining
- ✓ Automatic exchange of implant connections (ReFit option)
- ✓ Fully automatic and easy operation with "Wizard Workflow"



Auto-Calibration

Auto-calibration allows a quick and easy operation to ensure lasting accuracy without compromise.



Machine Table



Machine Table T250

790 x 900 x 580 mm
31,1 x 35,4 x 22,8 inch
B x H x T

Specifically designed to meet the needs of different machine types, the base tables feature both sturdy construction and attractive appearance.

The machine tables have sufficient floor space. Sturdy castors ensure optimum stability and easy movement of the machines. Drawers, cable ducts and a cabinet for the integration of appropriate extraction systems are included.



In Numbers

CORITEC 250i PRO+

Mechanics / electronics

Basic construction	Monoblock cast body, aluminium
Number of axes and operation type	5-axis, simultaneous machining
Rotation angle	A-axis 360° / B-axis up to ±30°
Spindle / power	High-frequency spindle / 1.0 kW
Maximum spindle speed	60.000 rpm
Tools	Milling and grinding tools with 6 mm shaft diameter
Tool changer integrated	10-fold; magazine interchangeable
Tool length control	≤ 0.002 mm precision
Integrated computer hardware	Windows based
Display	Control PC with 10.1" full HD touch screen integrated
Illumination	Dynamic LED illumination
Software	SmartControl™
Air pressure	7 bar/101.526 PSI constantly supply, 60 liters/min / 227.10 gpm/min
Cooling liquid	3.7 liter / 0.98 gal (US) integrated

Connecting requirements

Weight	95 kg / 209.4 lbs
Width x depth x height	23.3 x 24.1 x 28.5 inch / 591 x 613 x 724 mm
Line voltage / frequency	100 V - 240 V / 50/60 Hz

Sales and Support Partners

WORLDWIDE



Represented in Over 100 Countries

Since 2002, imes-icore® GmbH has been a leading provider of dental CAD/CAM systems and solutions.

With a broad portfolio of dental, milling and grinding systems, imes-icore® offers customized solutions for dental laboratories, milling centers and dental practices of all sizes.

Our open system philosophy allows the seamless integration of our milling machines into existing workflows.

imes-icore GmbH

Im Leibolzgraben 16
36132 Eiterfeld

☎ +49 (0) 66 72/898 228

✉ dental@imes-icore.com

www.imes-icore.com

imes-icore® GmbH
Eiterfeld +49 (0) 66 72/898 228
Fax +49 (0) 66 72/898 222
dental@imes-icore.com