



imes-icore[®]
Dental & Medical Solutions



CORiTEC[®] preMill Manufacturing System

QUALITY ASSURANCE THROUGH 510(K) CLEARANCE

The validated complete Package CORiTEC® preMill

INCLUDING ALL VALIDATED ADDITIONAL COMPONENTS

CORiTEC *one* preMill System Package:

- CORiTEC milling machine
- Case incl. 1-fold preMill holder, 6 preMills of your choice incl. abutment screw, CORiTEC **iCAMHD** software, CAD library, tool/milling tool set



CORiTEC 150i **PRO** preMill System Package:

- CORiTEC milling machine
- Case incl. 6-fold preMill holder, 6 preMills of your choice incl. abutment screw, CORiTEC **iCAMHD** software, CAD library, tool/milling tool set

The CORiTEC® preMill Manufacturing Systems

WHAT
ARE THE
DIFFERENCES?



CORiTEC *one* preMill



CORiTEC 150i **PRO** preMill

	CORiTEC <i>one</i> preMill	CORiTEC 150i PRO preMill
Machining axes	4 axes	5 axes
Touchscreen	✓	✓
Integrated PC	✓	✓
Premilled abutments	✓ (CoCr/Ti)	✓ (CoCr/Ti)
Wet processing	✓	✓
Dry processing	-	✓
Metal processing	✓ (Abutments)	✓ (Abutments/Blanks)
Integrated water tank	✓	✓
Autocalibration	✓	✓
Automated cleaning function	✓	✓
Clamping system	Single holder	98 mm Blank holder
Adapter system	Single holder Blocks/preMills	6-fold Blocks/preMills/Blanks
Automatic tool changer	6-fold	10-fold

CORiTEC® one preMill System

UNLIMITED FREEDOM WHEN
MILLING OR GRINDING BLOCKS
OR CORiTEC PREMILLS



Thanks to the precise rotation axis, CORiTEC preMills and blocks can be machined with optimum quality using the turn-grind process. The automatic 6-fold tool changer ensures full flexibility in material selection.

Metalworking*

Integrated CORiTEC
preMill Holder System

Integrated
CAM System

Without external
Compressed Air

Autocalibration

Automated
Cleaning Function

Metalworking*

Integrated CORiTEC
preMill Holder System

Integrated
CAM System

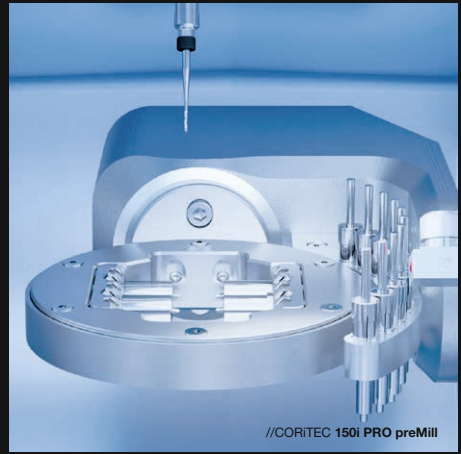
Without external
Compressed Air

Autocalibration

Automated
Cleaning Function

CORiTEC® 150i PRO preMill System

5-AXIS DRY OR WET MILLING OF
ALL MATERIALS FROM BLANKS,
BLOCKS OR CORiTEC PREMILLS



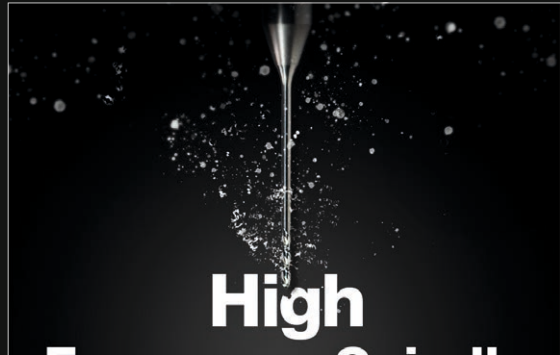
Every restoration is produced with optimum precision, and at the same time the flexibility opens up virtually free choice of materials and indications. Milling or grinding of blanks in zirconia, plastic and metal is possible, as is the processing of CAD/CAM blocks as well as blanks or CORiTEC preMill abutments. The CORiTEC 150i PRO preMill offers an unrivaled range of applications in the smallest possible space.

*Validated and optimized for preMill machining

The CORiTEC® preMill Systems

MORE PERFORMANCE, MAXIMUM FLEXIBILITY
AND EXTENDED APPLICATION POSSIBILITIES
WITH LOW SPACE REQUIREMENTS

The new powerful and durable high-frequency spindle with 860 watts and 100,000 rpm offers an exceptional ratio of performance, speed and precision. Thanks to the quick-change clamping system, the various holder systems can be changed quickly - while maintaining the same precision. This eliminates the need for time-consuming calibrations.



**High
Frequency Spindle**
[100.000 rpm]



**Manual Quick
Clamping
System**

// CORITEC 150i PRO preMill

Powered by HyperDent



Inclusive
validated + optimized
CAM Strategy

// Dental CAM [CORITEC® 150i PRO preMill]



**CORiTEC® preMill
Abutments + Tools**

// CORITEC preMill Systems

A WIDE RANGE OF CORiTEC
IMPLANT SYSTEMS WITH
FULL COMPATIBILITY TO
THE HOLDER SYSTEM AND THE
INTEGRATED CAM SOFTWARE

Easy identification
by means of lot and part number



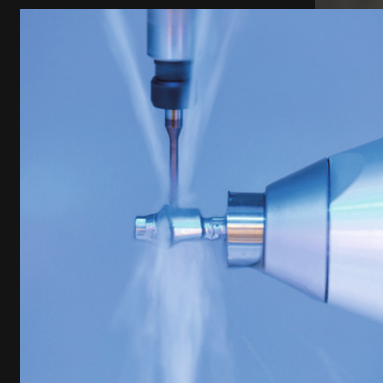

CORiTEC® one preMill

THE INTELLIGENT PRACTICE LAB SOLUTION

The new CORiTEC one preMill is the perfect choice for processing all common CAD/CAM blocks and CORiTEC preMill abutments. With the new extremely stable axis kinematics, the machine is also capable of milling premilled abutments in high quality.

The high-quality cast aluminum construction ensures maximum stability with lowest space requirements. An integrated powerful PC along with 10.1" HD touchscreen display supports comfortable and ergonomic operation. A single block holder with six tool change positions guarantees an intelligent, economical, safe and fast machining process with the highest quality.

In combination with all open scanners, the CORiTEC one preMill is ideal for all dental practices, practice laboratories and clinics. As a supplementary system for the specialized processing of glass ceramics, zirconia, composite and in particular for premilled abutments, the CORiTEC one preMill leaves nothing to be desired for clinics, laboratories and milling centers.



More applications possible!



- WET
- DRY
- 4 AX
- 3 mm
6x
- Temperature control
- Touchscreen
- Block holder
- Tool holder
- ION

CORiTEC[®] one preMill

HIGHLIGHTS

- Metalworking*
- Minimal footprint
- Integrated PC
- Autocalibration
- Short payback time
- Integrated CAM system
- Automatic cleaning function
- Extremely short grinding and milling times
- Integrated, validated CORiTEC preMill holder system
- Novel closed mono-block cast body for stability and precision
- Self-sufficient operation without external compressed air
- High precision due to integrated temperature compensation
- Perfect for machining CORiTEC preMill abutments as well as all common block materials

*for preMill machining

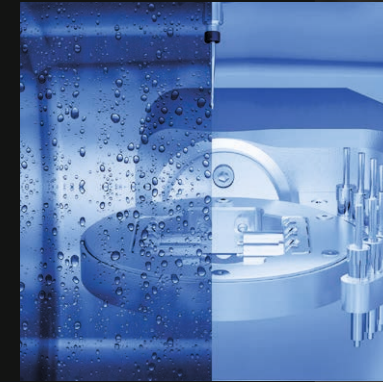


PMMA	WAX	1-fold holder (blocks/premilled abutments)	Abutment/ Hybrid Abutment	Crown, Bridge
Zr Pre-sintered	Zr Full dense sintered		Inlay, Onlay Veneer	
PEEK	COMPOSITE	Model casting	Model	Drilling template
Glass ceramics	Premilled Ti- Abutment		Model casting	Bridge
Premilled CoCr- Abutment			Telescopic technology	

CORiTEC® 150i PRO preMill

THE FLEXIBLE MILLING SYSTEM IN CONFINED SPACES

The extremely stable design of the mono-block cast body enables precise machining in round and block form as well as CORiTEC preMill abutments for all common materials. The machine's small dimensions and 5-axis simultaneous technology thus offer a unique ratio of machine size to functionality. Convince yourself of the performance of the CORiTEC 150i PRO preMill for your laboratory!



More applications possible!



- WET
- DRY
- 5 AX
- 3 mm / 10x
- Temperature control icon
- Touchscreen icon
- Control panel icon
- Workpiece icon
- Person icon
- Material icon
- ION

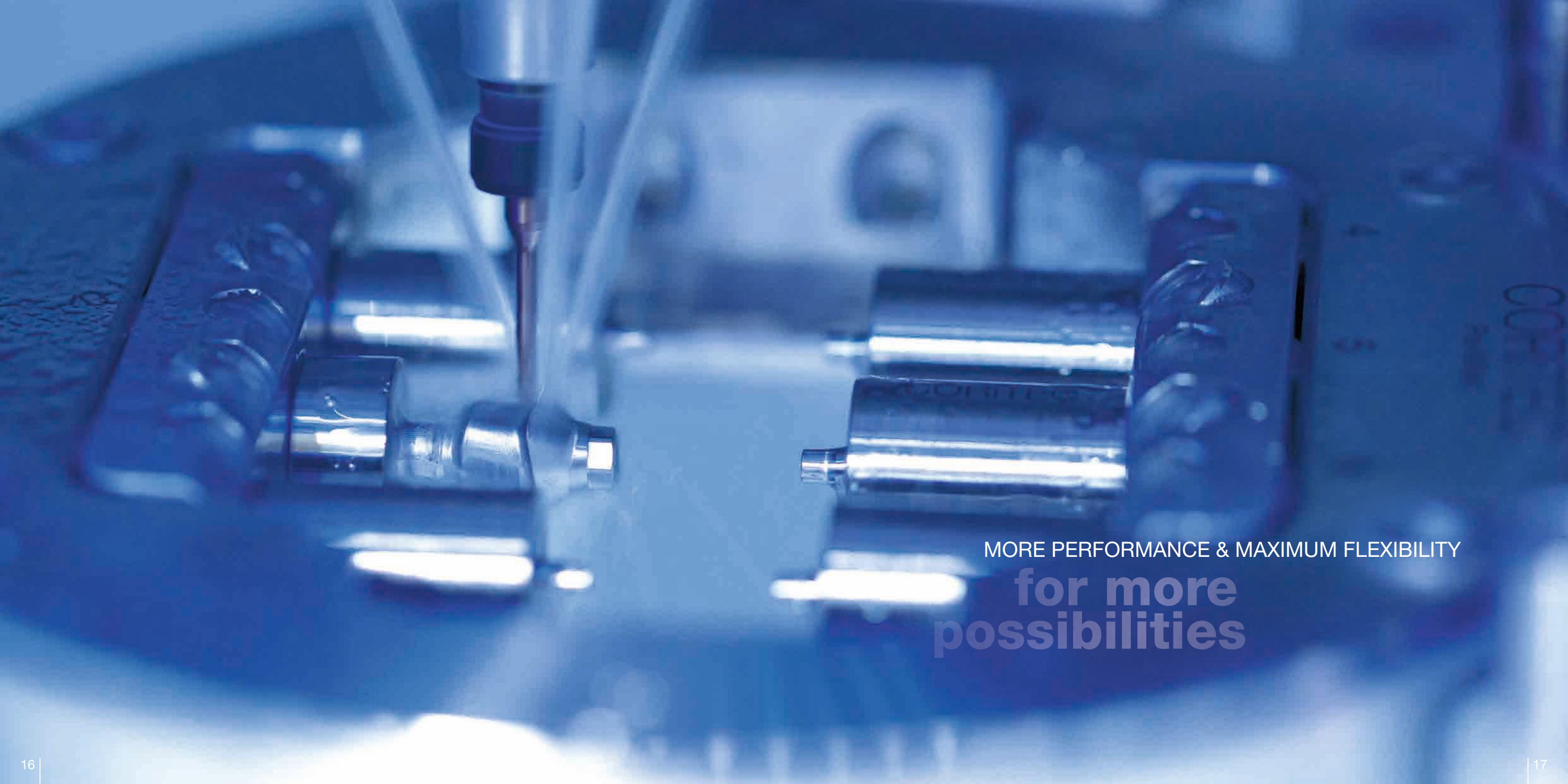
CORiTEC® 150i PRO preMill

HIGHLIGHTS

- Integrated preMill holder system
- Integrated Dental CAM System
- Wet and dry machining possible
- Short payback time
- Minimal footprint
- Autocalibration
- Automated cleaning function
- Semi-open blank holder "C-Clamp" (optional)
- Metal machining of blanks and CORiTEC preMill abutments
- High precision due to integrated temperature compensation
- Novel, closed mono-block cast body for highest stability and precision



PMMA	WAX	Standard	PreMilled Abutment	Dentures	Abutment	Hybrid Abutment	»»	
Zr	COMPOSITE							
PEEK	PreFab Abutments	C-Clamp	Block	Manual clamping system	Crown, Bridge	Inlay, Onlay Veneer	Model	Full Denture
Glass-ceramics	Ti							
CoCr					Model	Drilling template	Model casting	Telescopic technology



MORE PERFORMANCE & MAXIMUM FLEXIBILITY

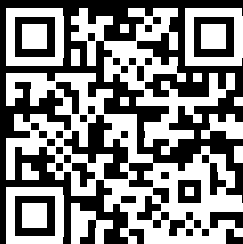
for more possibilities

CORiTEC® preMill Tools | 3 mm shaft



The CORiTEC tool set is included in the scope of delivery for the CORiTEC preMill manufacturing systems, so that precise machining can be started immediately!

ALL TOOLS
AND MATERIALS –
JUST SCAN HERE...



T2/T7 - 2.0 | 3.0 mm
radius milling tool (l = 12 mm)

T2	Ti		up to 15 mm
T7	CoCr		Blades

2.0 mm Ø 3 mm

Art.-No. 530029 2003

T3/T8 - 1.5 | 3.0 mm
radius milling tool (l = 12 mm)

T3	Ti		up to 15 mm
T8	CoCr		Blades

1.5 mm Ø 3 mm

Art.-No. 530029 1503

T4/T9 - 1.0 | 3.0 mm
radius milling tool (l = 9 mm)

T4	Ti		up to 15 mm
T9	CoCr		Blades

1.0 mm Ø 3 mm

Art.-No. 530029 1003

T58/T59 - 2 | 3.0 mm
highspeed, 15 mm

T58	Ti*		up to 15 mm
T59	CoCr*		Blades

2 mm Ø 3 mm

Art.-No. 530031 2003

* T58 – Machining of preMill abutments
T59 – Machining of blanks up to 15 mm and preMill abutments

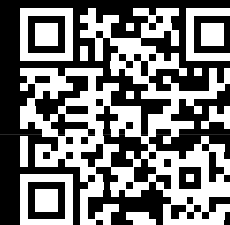
Example illustration of NobelReplace RP // *Registered trademark // Not a company of imes-icore GmbH

Compatible CORiTEC preMill Platforms for Implant Systems

All CORiTEC blanks, which are available in all implant systems, are supplied without exception including the corresponding abutment screw. When ordering the complete CORiTEC 150i PRO preMill or CORiTEC ONE preMill system, six blanks of your choice are included in the delivery.

The range of CORiTEC preMill blanks is continuously being expanded with compatible platforms for implant systems.

Please feel free to contact us if you need a different platform. Or take a look at the current status via the QR code.



Manufacturer	Implant Type
Dentsply Sirona	Astra Tech EV Astra Tech TX XiVE
HIOSSEN	Osstem ET
Nobel Biocare™	Branemark System CC NobelActive Replace Tri-channel
straumann	Bone Level Neodent Grand Morse Standard Tissue Level
ZIMMER BIOMET	Certain Ex Hex Screw-vent (TSV)

...and more.

CORiTEC® SmartControl

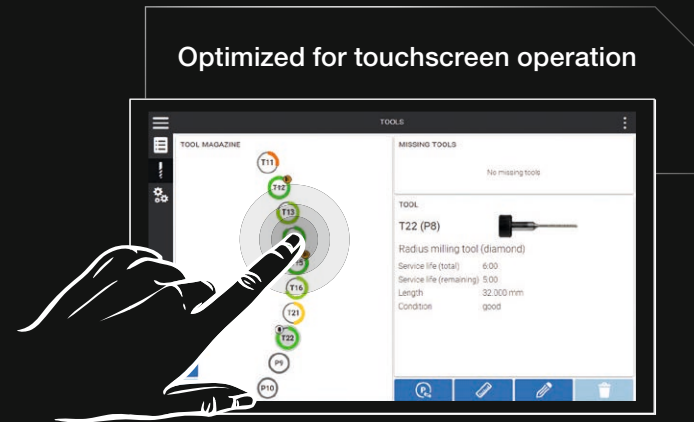
SMART CONTROL OF MACHINE SOFTWARE

SmartControl: one touch ahead!

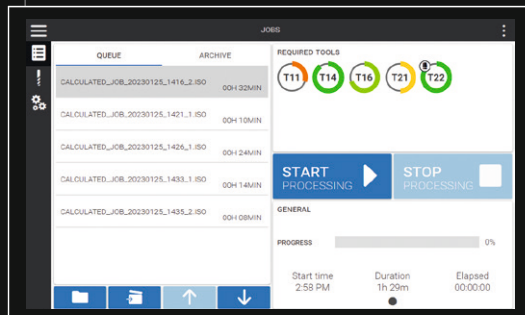
The newly developed control software SmartControl enables absolutely intuitive operation of our milling machines – from selecting the job to milling to querying the machine status. The self-explanatory and optimized handling makes it possible to start operating the machine in the shortest possible time. Starting a milling process requires only two clicks – you benefit from the smart time savings for your workflow!

FEATURES

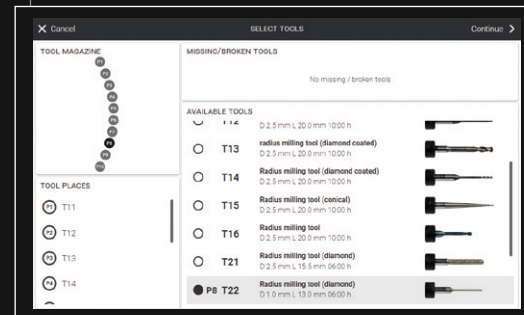
- Modern design and simple touch operation
- Intelligent selection of milling jobs
- Easy tool and material loading
- Autocalibration of the machine
- Wizard guided cleaning and maintenance
- Connection to our Dental Smart Market (DSM)
- Multilingual program interface
- Automatic update function



Automated transfer of information from the CAM software



Ideal tool management



CORiTEC® iCAMHD Software

The CORiTEC **iCAMHD** software is included in the scope of delivery of both complete systems.

- High degree of automation
- Support for order management
- Fast training through intuitive workflow
- Individual management of processing options
- Automatic update function
- Creation of individual quality standards
- Strategies for tool path generation
- Complete collision monitoring
- Free runtime in the first year including updates and support! Renewal for one additional further year against an update/support fee

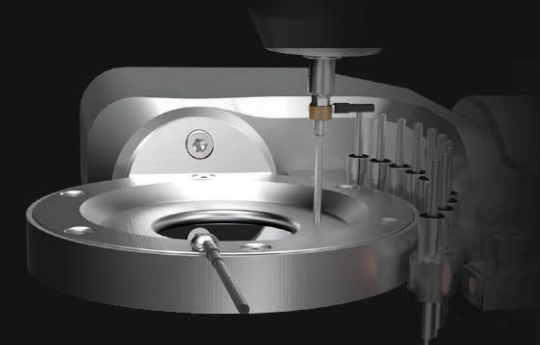


	CAMHD <i>one</i>	iCAMHD <i>eco</i>
Milling Machine	CORiTEC <i>one</i> preMill	CORiTEC 150i <i>PRO</i> preMill
Number of axes	4 axes	5 axes
Materials	Glass ceramics, Titanium (preforms), PMMA, Zirconia, Composites, CrCo	Glass Ceramics, Titanium (preforms), PMMA, Zircon, Composites, Wax, CrCo, Peek
Indications	Hybrid Abutments, Hybrid Abutment Bridges, Crowns/Bridges, Inlays/Onlays/Veneers, Preforms	Hybrid Abutments, Hybrid Abutment Bridges, Crowns/Bridges, Inlays/Onlays/Veneers, Bite Splints, Models, Telescopes, Drilling Templates
Functionality	All Standard functions	All Standard functions
Optional		Denture Modul

Autocalibration

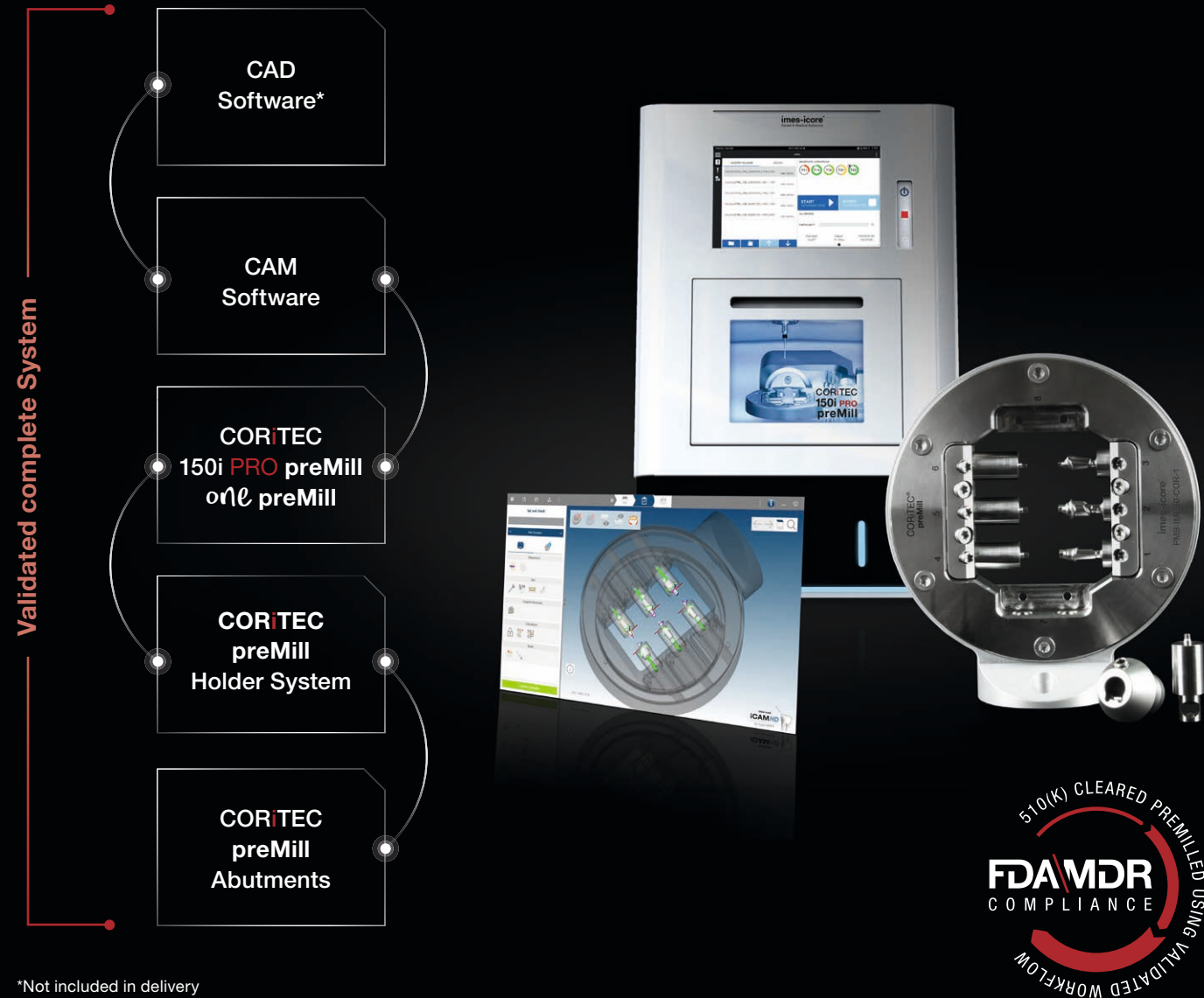
READY CALIBRATED PREMILL SYSTEM

Fast, precise, cost-efficient – autocalibration enables dentists as well as dental technicians to handle quickly and easily to ensure lasting precision without compromise. The autocalibration is included in the starter kit, which can be ordered separately.

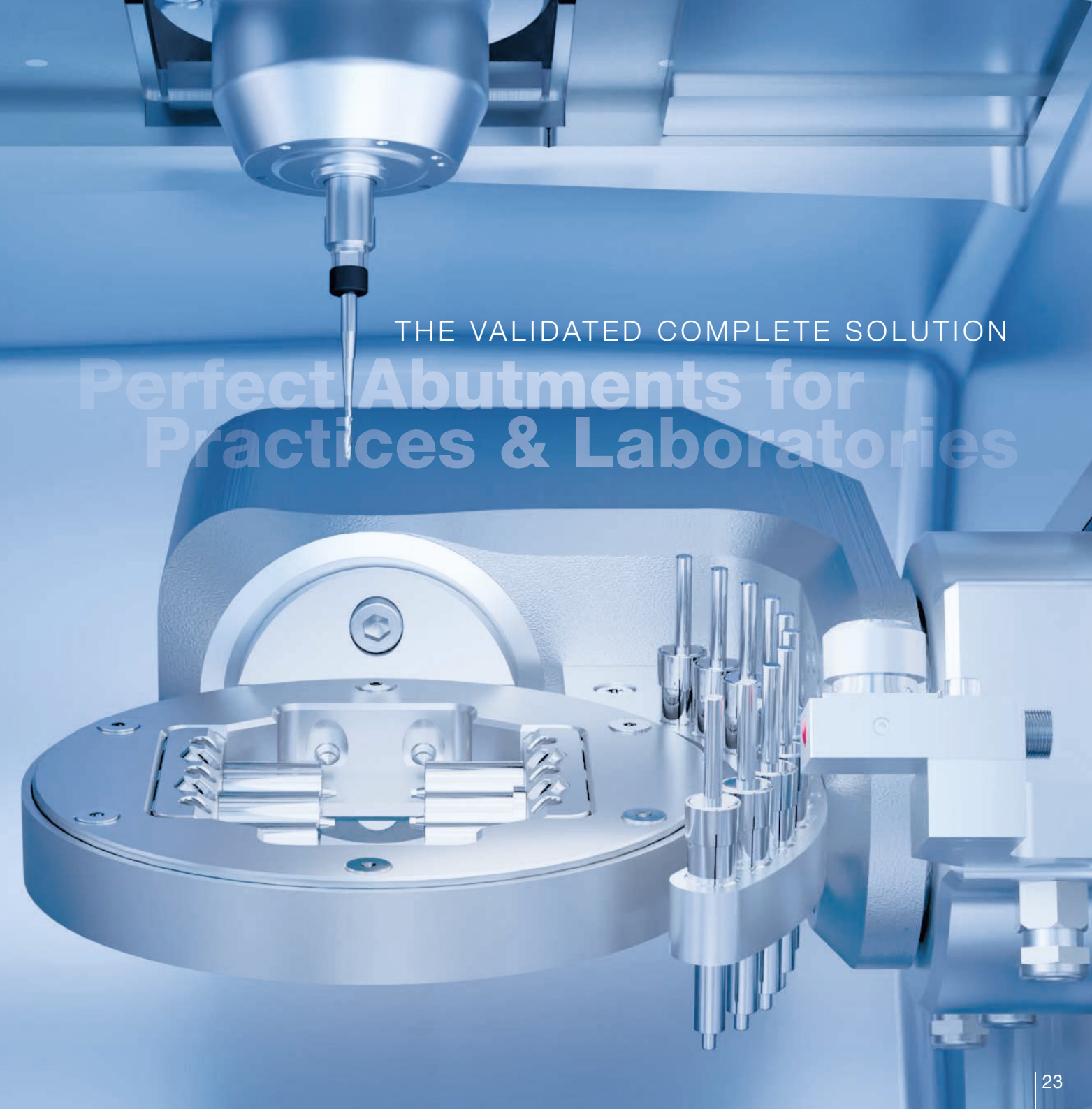


Full integrated workflow

510(K) CLEARED COMPLETE SYSTEM



*Not included in delivery



THE VALIDATED COMPLETE SOLUTION

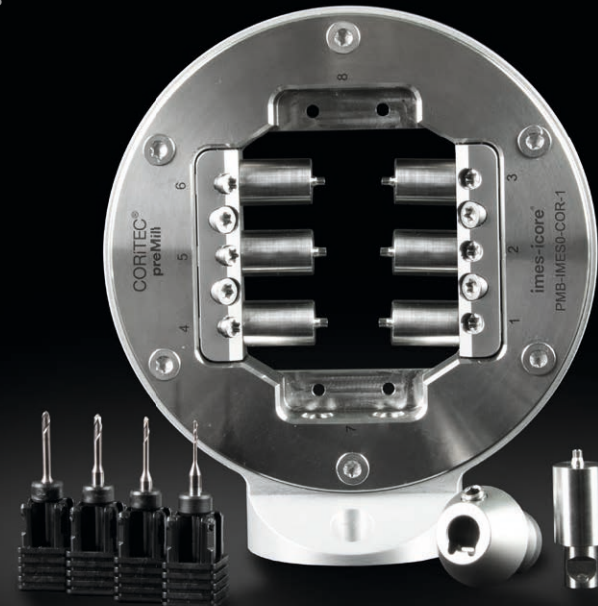
Perfect Abutments for Practices & Laboratories

Validation Advantages

The advantages of validation are obvious! Precisely coordinated components and strategies create a guided certified workflow. Reproducible results can thus be created quickly and reliably. The 510(k) clearance is coordinated for in-house milling of CORiTEC preMills on the CORiTEC milling machines.

HIGHLIGHTS

- Complete and open for the most important implant platforms
- Digital workflow solutions for major implant indications
- Suitable for in-house or outsourced production
- Coordinated clamping and calibration systems for CORiTEC milling machines/holders/adapters
- Validated and optimized CAM strategies for CORiTEC milling machines/preMills/tools
- Batch-certified preMills incl. unique marking for individual identification
- Libraries for exocad and 3Shape with associated parameters
- Optimized tools for coordinated manufacturing processes, quality and precision
- Defined milling results for reproducible results



Regulations and Risk Minimizations through validation



In the US, the FDA classifies customer-specific milling as the manufacture of a Class II medical device. Labs milling custom implant abutments with CAD/CAM technology must either commission a validated milling center (VMS) with a listing of the facility and devices, and implement a Quality Management System or use products with a 510(k) pre-market clearance and registration with a validated digital workflow.

THE LIABILITY RISKS ARE GREAT AND CAN BE COSTLY IN THE EVENT OF NON-COMPLIANCE:

- Production stop of product lines for laboratories are possible
- Investments in subsequent equipment and approvals become a burden
- Profitability decreases



Your Solution

The use of the FDA-cleared CORiTEC preMill abutments inside imes-icare validated workflow is essential for laboratories to produce custom abutments on-site. It ensures compliance with legal regulations, assists in creating restorations that meet the highest standards of safety and effectiveness, and reduces the risk of liability issues for the laboratory.

CORiTEC® preMill Abutment


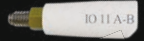




CUSTOMIZED SOLUTION WITH ADDED VALUE AND GROWTH FOR LABORATORIES AND PRACTICES

The CORiTEC preMills are supplied with abutment screw, compatible libraries, modules and holders. This enables dental technicians and dentists in the laboratory and dental practice to manufacture customized one-piece abutments made of titanium with full control over quality and time – fully in accordance with FDA regulations.

ADVANTAGES

- Follows the natural morphology of the soft tissue
- Supports the gingiva and creates a root-shaped emergence
- Allows angulation for alignment of the prosthetic crown
- Adapts to the anatomical shape of the crown, providing perfect support and a larger bonding surface
- Allows a natural transition from the implant to the prosthetic crown
- Increases the value in the laboratory

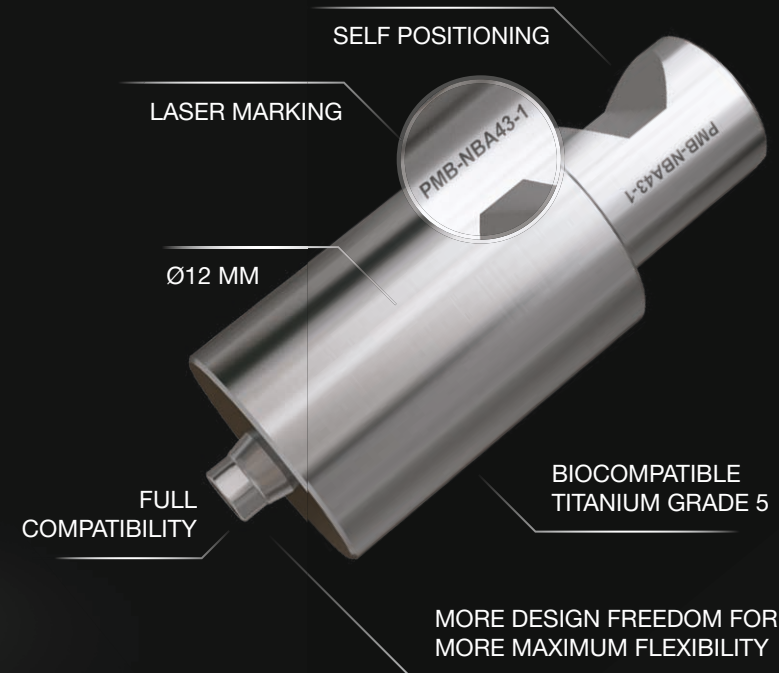
Components of CORiTEC preMill System

	Library
	Scan Body
	Hybrid Base (Ti-bases)
	Prosthetic Screws
	Analog for Printed Models (PMA)
	preMill Abutment



FEATURES

- **Self-positioning stable mounting system** for optimal positioning on the holder
- **Laser marking with batch and part number** for easy identification before and after the milling process and for legal legal traceability
- **Full compatibility** due to precision fit of the screw on the original interface
- **Self-locking screws** prevent loosening from the module
- **Modular design of the holder** (easy assembly, cleaning and easy replacement)
- **One-tool concept** simplifies mounting of the holder, modules and CORiTEC preMills by using a Torx 20 tool

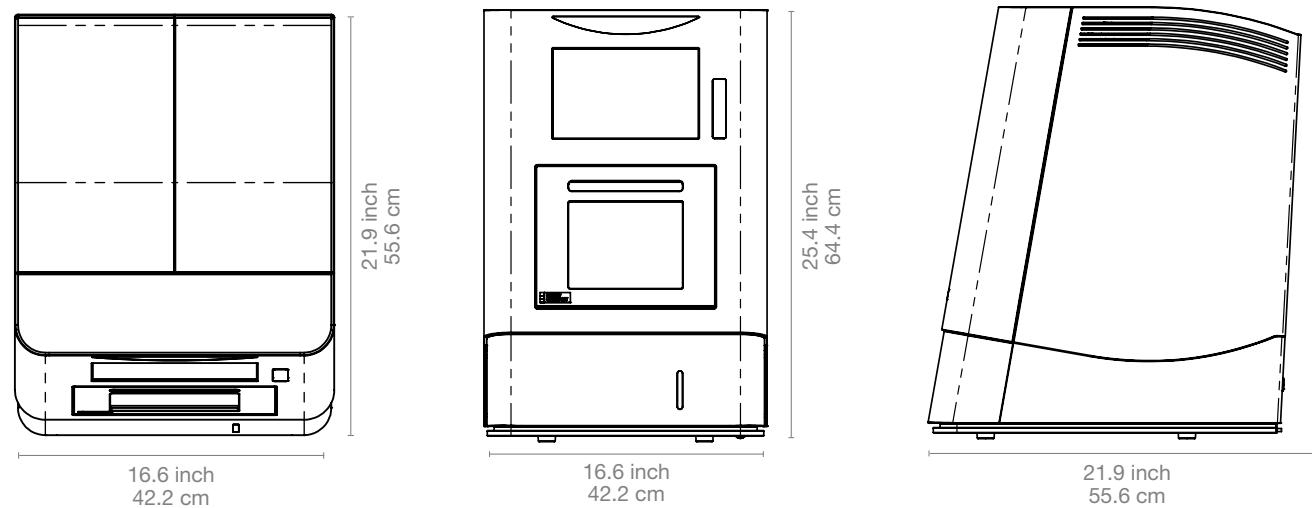


EXTRAS

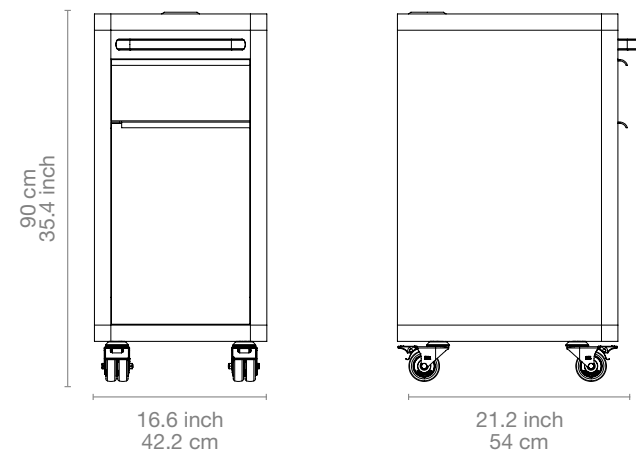
- **High degree of design freedom** due to minimal gingival height and improved library geometry
- **Perfect implant emergence profile**, as no widening of the emergence profile above the implant diameter is required
- **Smooth transition area** significantly reduces manual reworking
- **Perfect CAM interaction** due to automatic nesting by implementation of metadata

Dimensions

CORiTEC® one preMill



Machine table T0



In numbers

Mechanics/electronics

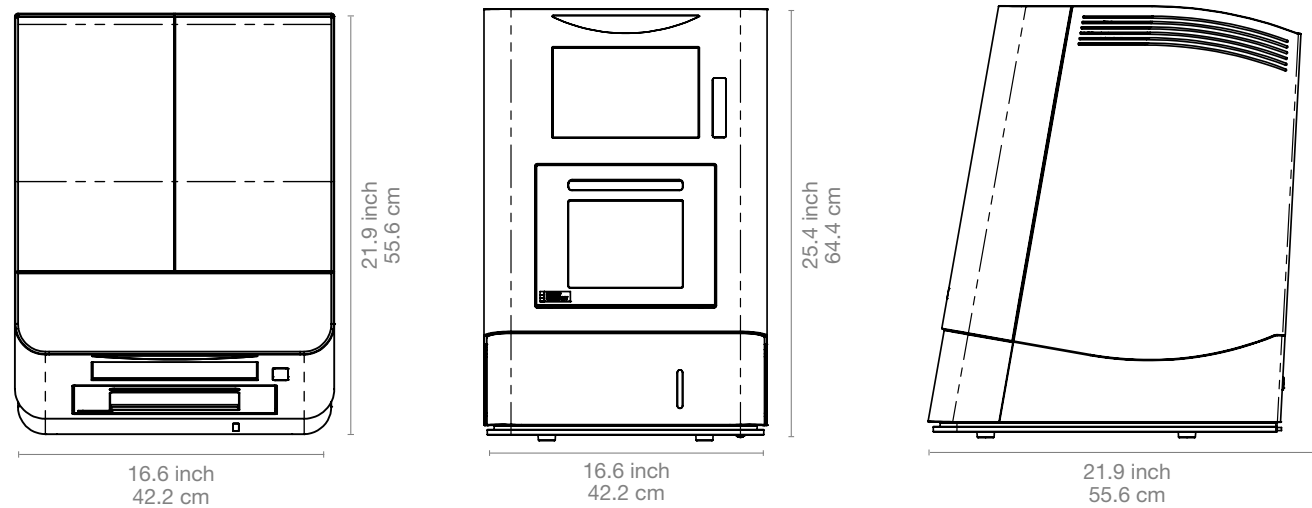
Number of axes / operation type	4 axes, simultaneous processing
Angle of rotation	A-axis 360°
Spindle	High-frequency spindle
Maximum speed / spindle power	100.000 rpm, 860 watt
Tools	Milling and grinding tools with 3 mm tool shaft
Tool changer	6-fold
Tool length control	≤ 0.002 mm precision
Integrated PC	Windows based
Display	Integrated 10"1" touchscreen
Illumination	Dynamic LED illumination
Software	SmartControl integrated CNC software
Air pressure	No external air pressure needed
Cooling liquid	3 liter/11.36 gpm integrated

Connecting requirements

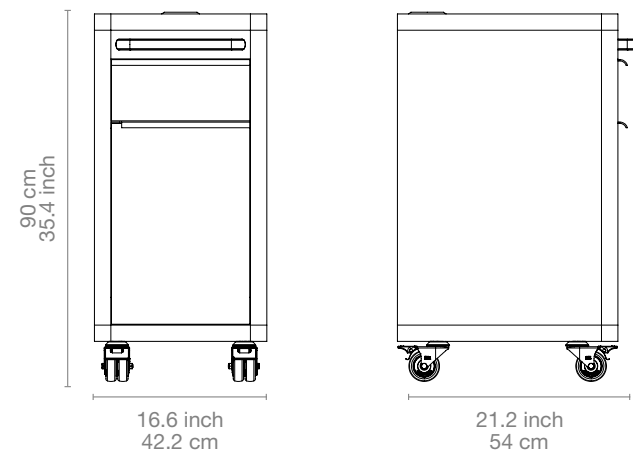
Weight	77 kg / 169.8 lbs
Width x depth x height	16.6 x 21.9 x 25.4 inch / 422 x 556 x 644 mm
Line voltage / frequency / maximum power	100 V - 230 V / 50/60 Hz / 500 watt

Dimensions

CORiTEC® 150i PRO preMill



Machine table T0



In numbers

Mechanics/electronics

Number of axes and operation type	5 axes, simultaneous processing
Rotation angle	A-axis 360°, B-axis 130°
Spindle / power	High-frequency spindle / 860 W
Maximum spindle speed	100.000 rpm
Tools	Hilling and grinding tools with 3 mm tool shaft
Tool changer	10-fold
Tool length control	≤ 0.002 mm precision
Integrated PC	Windows based
Monitor	Integrated 10"1" touchscreen
Illumination	Dynamic LED illumination
Software	SmartControl integrated CNC software
Air pressure	3 bar/43.5 PSI, 50l/min/189.25 gpm/min
Cooling liquid	3 liter/11.36 gpm integrated

Connecting requirements

Weight	75 kg / 165.38 lbs
Width x depth x height	16.6 x 21.9 x 25.4 inch / 422 x 556 x 644 mm
Line voltage/frequency	100 V - 240 V/50/60 Hz

Sales and Support Partner worldwide



Represented for you in over 100 Countries.

imes-icore® GmbH has been a leading manufacturer and technology partner since 2003 in the field of dental CAD/CAM systems and solutions.

With its unique range of dental milling and grinding systems, imes-icore® offers a perfect selection for all individual requirements for dental laboratories, milling centres and dental practices of all sizes.

Our Open-System product philosophy makes it possible to easily integrate our milling machines into your existing workflow and to integrate them with your open scanners and your CAD/CAM software. We are open for your material selection.

imes-icore® GmbH

Fon +49 (0) 66 72/898 228

Fax +49 (0) 66 72/898 222

dental@imes-icore.com